



3rd FLOOR

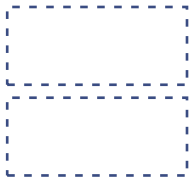
H1, RENTED 335,0M²

H4, RENTED 263,5M²

LIFT HALL (GENERAL AREA) 24,0M²

STAIRS 14,0M²

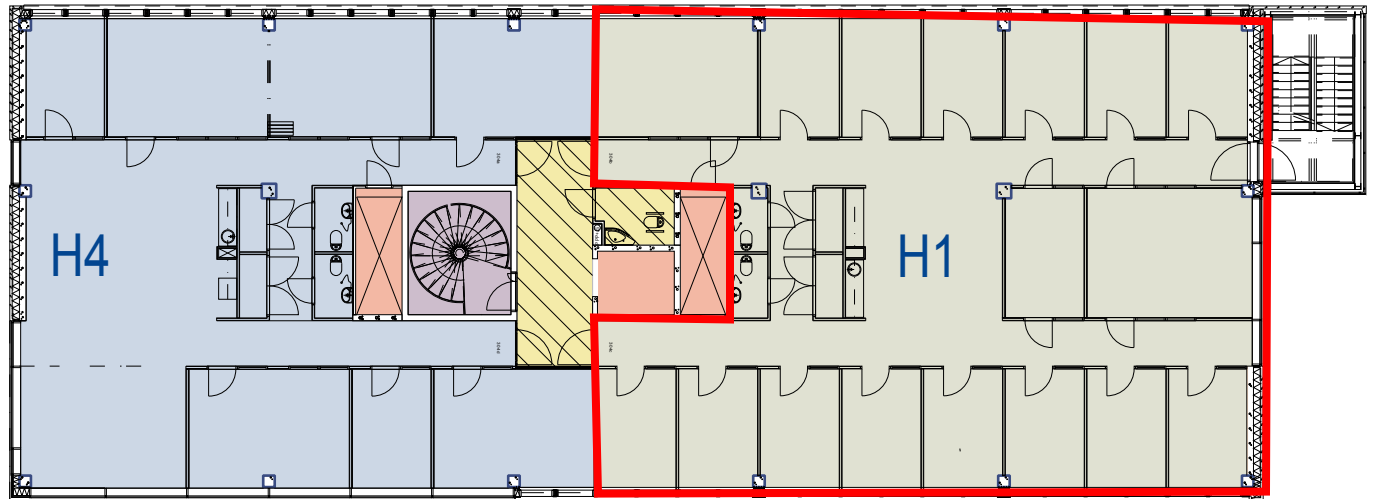
H1	Rented	314,0m ²
	+share of 3rd floor lift hall area	14,0m ²
	+share of 1st floor lobby area	7,0m ²



H4	Rented	248,5m ²
	+share of 3rd floor lift hall area	10,0m ²
	+share of 1st floor lobby area	5,0m ²

LIFT HALL AREA	LIFT HALL AREA	24,0m ²
	to be shared in proportion to each tenant	

TECHNICAL AND MAINTENANCE	Technical and maintenance	32,0m ²
	Stairs	14,0m ²
	Elevator and HVAC shafts	18,0m ²



AVIA LINE 3 RENTED NET FLOOR AREA

3RD FLOOR 1:250, 14.9.2016